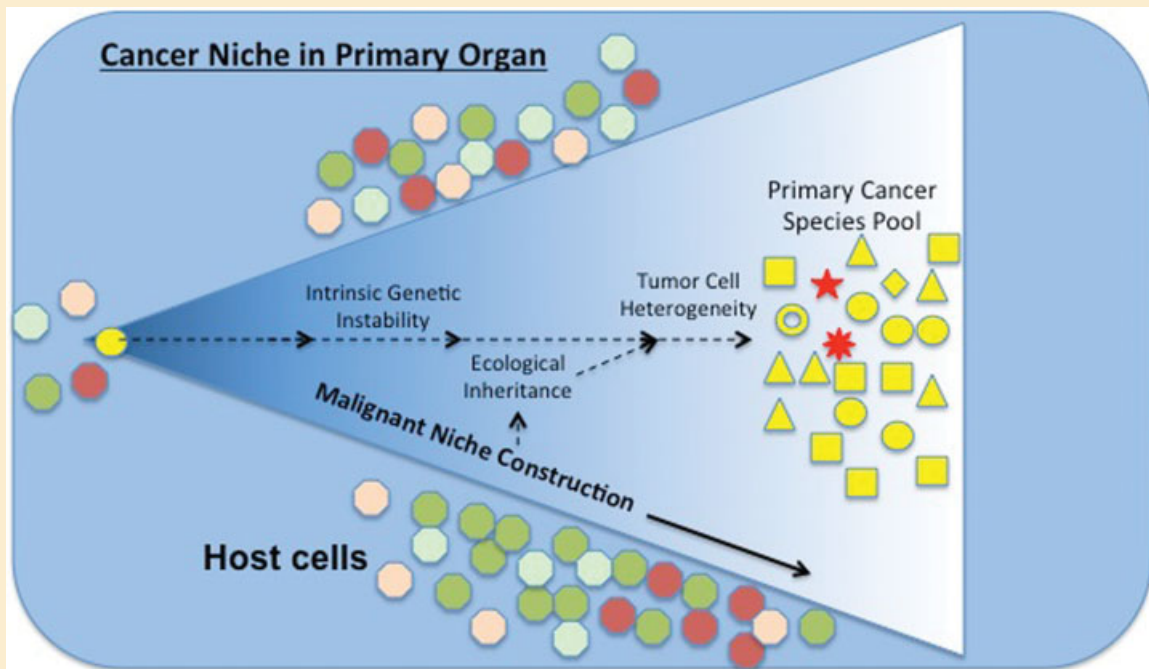


## Niche Inheritance: A Cooperative Pathway to Enhance Cancer Cell Fitness Through Ecosystem Engineering

1478

Kimberline R. Yang, Steven M. Mooney, Jelani C. Zarif, Donald S. Coffey, Russell S. Taichman, and Kenneth J. Pienta

ACCEPTED MANUSCRIPT ONLINE 2 APRIL 2014



Yang et al. describe cancer cells as an invasive species that is able to establish itself in a new environment. The concept of niche construction can be utilized to describe the process by which cancer cells terraform their environment, thereby engineering an ecosystem that promotes the genetic fitness of the species.